

35 CFM Fully enclosed 4 stage Heavy Duty LMF V16G Compressor

LMF Heavy Duty Aircooled Compressor (recently serviced)

Manufacturer : Leoberdorfer Maschinenfabrik AG

Type : Air Cooled

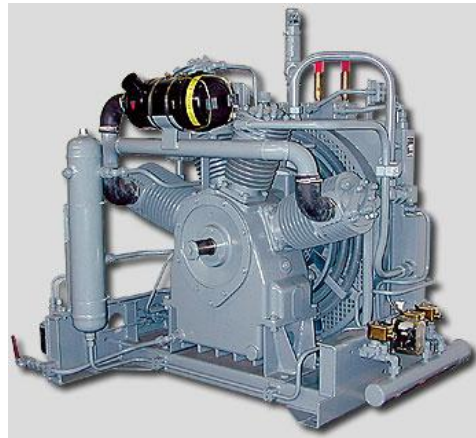
Model : V16-3410-L5

Four stages, single acting, aircooled cylinders

Delivery: 1 m³/min (35 cfm)

Working pressure 250 bar (3600 PSI)

Electric motor 18,5 kW (25 hp); 0 hours since last rebuild --- JUST REBUILT



This compressor is in excellent condition and fully functional.

